

2-INCH GAUGES

The Complete Line Of Compact, Mechanical Gauges For Automotive, Marine, Fleet And Industrial Use.

These fine quality instruments have a full sweep, rugged, 270° meter movement. All lighting and panel mounting hardware included. Installation hardware included except as noted. All mechanical pressure gauges require Pressure TEE Installation Kit, Part #SGA-20, if standard dash panel light is to be retained.



SMG-1201



SMG-1202



SMG-1203



SMG-1301



SMG-1302



SMG-1303



SMG-1304



SMG-1305



SMG-1306

MECHANICAL

Water Temperature, Model SMG-1201

100° to 280°F range. Standard 72" length Capillary Tubing. Also available with longer length Capillary Tubing as Model #1201-1, 96", 1201-2, 120", and 1201-3, 144".

FOR MARINE USE ONLY

Water Temperature, Model SMG-1202

60° to 240°F range. Standard 72" length Capillary Tubing.

Oil Temperature, Model SMG-1203

100° to 340°F range. Standard 72" length Capillary Tubing.

Oil Pressure, Model SMG-1301

0 to 100 pounds per square inch range. Requires tubing kit, #SGA-16.

Oil Pressure, Model SMG-1302

0 to 150 pounds per square inch range. Requires tubing kit, #SGA-16.

Air Pressure, Model SMG-1303

0 to 150 pounds per square inch range. Requires tubing kit #SGA-16.

Fuel Pressure, Model SMG-1304

DO NOT MOUNT INSIDE PASSENGER AREA.

0 to 15 pounds per square inch range. Requires tubing kit #SGA-16.

Vacuum Gauge, Model SMG-1305

0 to 30 inches of mercury pressure range. Requires tubing kit #SGA-16.

Pressure Gauge, Model SMG-1306

0 to 200 pounds per square inch range. Requires tubing kit, #SGA-16

2-INCH GAUGES

The Complete Line Of Compact, Electric Gauges For All Automotive, Marine, Fleet and Industrial Use.

These fine quality instruments have a rugged, 60° dial range and are designed for use with 12-volt ignition systems. They are also adaptable to 24 and 32-volt systems with proper resistors (see accessories page). All lighting and panel mounting gear included. Installation hardware included except as noted.

ELECTRICAL

Fuel Level, Model SEG-1001

Shows complete range of fuel level in tank. See accessories page for selection of correct transmitter.

MARINE APPLICATION ONLY

Water Temperature, Model SEG-1002

60° to 240°F range. Requires sender #SGA-25-1.

Water Temperature, Model SEG-1003

100° to 280°F range. Requires sender, #SGA-25-1.

Oil Temperature, Model SEG-1004

100° to 340°F range. Requires sender #SGA-25-1 or #SGA-31. See sender listing for thread sizes.

Oil Pressure, Model SEG-1005

0 to 100 pounds per square inch range. Requires electrical sender #SGA-26.

Ammeter, Model SEG-1101

100-0-100 range. Requires shunt, part #SGA-19.

Ammeter, Model SEG-1102

60-0-60 range. Does not require shunt.

Voltmeter, Model SEG-1103

10-16 volt range.

Hourmeter, Model HM-102

- Maintains accuracy between temperature ranges of -50° to 175°F
- Withstands vibration amplitudes of .062 inches between 10-55 CPS in 3 planes
- Solid-state design, no contact points, wheel pivots or hair springs
- Adaptable to positive or negative ground systems
- Applies to all 12-volt systems, both vehicular and stationary
- Turns on and off instantly with engine
- Sealed against dust and water
- Simple two-wire installation, polarity protected
- Records up to 10,000 hours
- Comes with all panel mounting and lighting hardware



SEG-1001



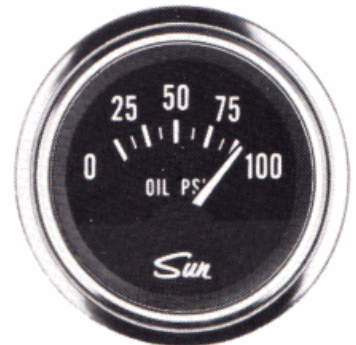
SEG-1002



SEG-1003



SEG-1004



SEG-1005



SEG-1101



SEG-1102



SEG-1103



HM-102